

Floating Crane's - 510 & 511



Clyde Model 24 Crane

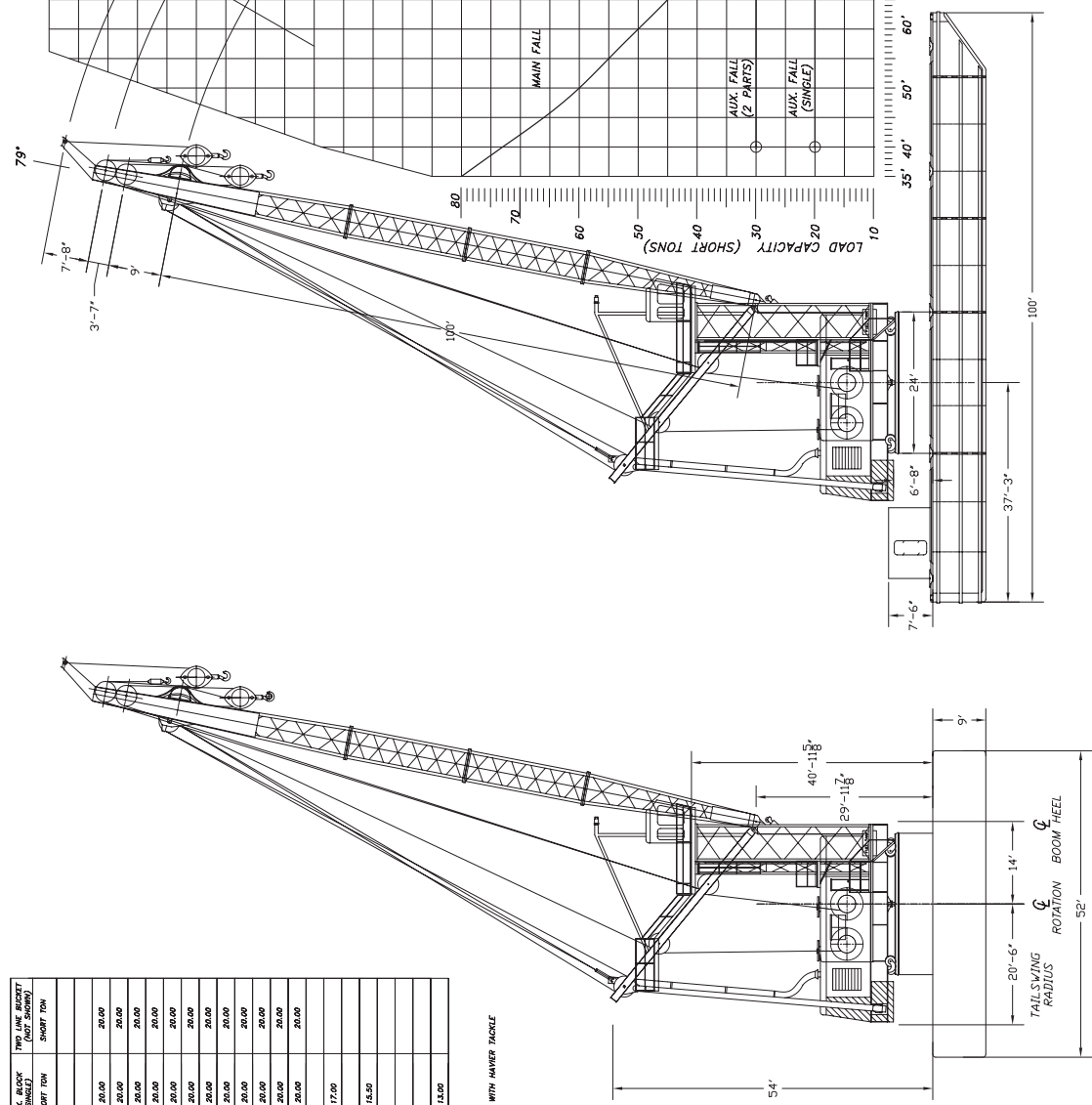


YEAR BUILT:	1970
LENGTH:	100'
BEAM:	52
MAX DRAFT:	9'
BOOM LENGTH	120'
MAIN BLOCK LOAD CAPACITY	80- Short Tons (35' Radius)
AUX. BLOCK LOAD CAPACITY (2 PART)	30-Short tons (40' Radius)
AUX. BLOCK LOAD CAPACITY (SINGLE)	20-Short tons (40' Radius)
2-LINE BUCKET LOAD CAPACITY	20-Short tons (40' Radius)
WINCHES	3 EACH. -CLYDE FRAME 12S
MAIN ENGINE	CAT D 353 W/ 19" CLUTCH ; 13800 TWIN DISC TORQUE CONVERTER
GENERATOR	CAT 3306 W/ 65 KW GENERATOR FOR SWING 75 KW A/C GENERATOR, ELECTRIC SWING
HOLDING & CLOSING WIRES	1-3/8" X 325'
TAGLINE CABLE	5/8" X 1,000'
BOOM CABLE	1-3/8" X 1,280'
FUEL CAPACITY: (TWO 13,359 GALLON TANKS)	26,718 GALLONS
SPUDS	2x 36" Diameter x 60'
TONNAGE:	475 - GT
Model Number	24 DE 10059
OFFICIAL NUMBER:	583759/ 583760

Sales Contact: James Greco jlgreco@weeksmarine.com 908-272-4010

RADIUS	MAIN FALL (2 PARTS)		AUX. FALL (2 PARTS)		AUX. BLOCK (SINGLE)		TWO LINE BLOCK (NOT SHOWN)	
	SHORT TON	LONG TON	SHORT TON	LONG TON	SHORT TON	LONG TON	SHORT TON	LONG TON
30'	50.00							
35'	50.00							
40'	50.00							
45'	50.00							
50'	50.00							
55'	50.00							
60'	50.00							
65'	50.00							
70'	50.00							
75'	50.00							
80'	50.00							
85'	50.00							
90'	50.00							
95'	50.00							
100'	50.00							
105'	50.00							
110'	50.00							
115'	50.00							
120'	50.00							
125'	50.00							
130'	50.00							
135'	50.00							
140'	50.00							
145'	50.00							
150'	50.00							
155'	50.00							
160'	50.00							
165'	50.00							
170'	50.00							
175'	50.00							
180'	50.00							
185'	50.00							
190'	50.00							
195'	50.00							
200'	50.00							
205'	50.00							
210'	50.00							
215'	50.00							
220'	50.00							
225'	50.00							
230'	50.00							
235'	50.00							
240'	50.00							
245'	50.00							
250'	50.00							
255'	50.00							
260'	50.00							
265'	50.00							
270'	50.00							
275'	50.00							
280'	50.00							
285'	50.00							
290'	50.00							
295'	50.00							
300'	50.00							
305'	50.00							
310'	50.00							
315'	50.00							
320'	50.00							
325'	50.00							
330'	50.00							
335'	50.00							
340'	50.00							
345'	50.00							
350'	50.00							
355'	50.00							
360'	50.00							
365'	50.00							
370'	50.00							
375'	50.00							
380'	50.00							
385'	50.00							
390'	50.00							
395'	50.00							
400'	50.00							
405'	50.00							
410'	50.00							
415'	50.00							
420'	50.00							
425'	50.00							
430'	50.00							
435'	50.00							
440'	50.00							
445'	50.00							
450'	50.00							
455'	50.00							
460'	50.00							
465'	50.00							
470'	50.00							
475'	50.00							
480'	50.00							
485'	50.00							
490'	50.00							
495'	50.00							
500'	50.00							

BALLAST:
190,000 LBS. AT 350 LBS./CUBIC FOOT.
NOTE: 2 PART WHIP 70,000 LBS. 40' TO 70' RADIUS WITH HAWKER TACKLE



REFERENCE DRAWINGS:
- CLYDE IRON WORKS, INC.
GENERAL ASSEMBLY J 101271
CAPACITY CHART - CW 3945-YC

NO. DATE REVISION BY

WEEKS MARINE, INC.
CAMDEN, NJ 08102-2497
(908) 272-0210

"WEEKS 511"
CAPACITY AND ELEVATION CHART

DESIGN BY: ROMAN GORPHEL
CHECKED BY: WELLES
APPROVED BY: WELLES

SCALE: 3/32 IN. = 1 FT.
DATE: 6/8/2002
SHEET 1 OF 1

DWG. NO. 511101-01
CASE FILE NAME: PUMP-511-01
REV. NO.

ALL DIMENSIONS ARE IN INCHES