

Elevation View
Scale: 1" = 40'-0"

360° Full Revolving Capacities (SHORT TONS)


RADIUS	MAIN	AUX.	WHIP
70'	500		
76'	500	150	
83'	455	150	25
85'	442	150	25
90'	418	150	25
95'	392	150	25
100'	371	150	25
105'	350	150	25
110'	335	150	25
115'	321	150	25
120'	307	150	25
125'	290	150	25
130'	278	150	25
135'	265	150	25
140'	250	150	25
145'	236	150	25
150'	229	150	25
155'	221	150	25
160'	214	150	25
165'	206	150	25
170'	198	150	25
175'	190	150	25
180'	184	144	25
185'	177	135	25
190'	169	126	25
195'	162	118	25
200'	154	110	25
205'	147	102	25
210'	140	95	25
215'	134	88	25
220'		82	25
225'		75	25
230'		68	25
235'		62	25
240'		56	25
245'		52	25
250'		48	25
257'			25

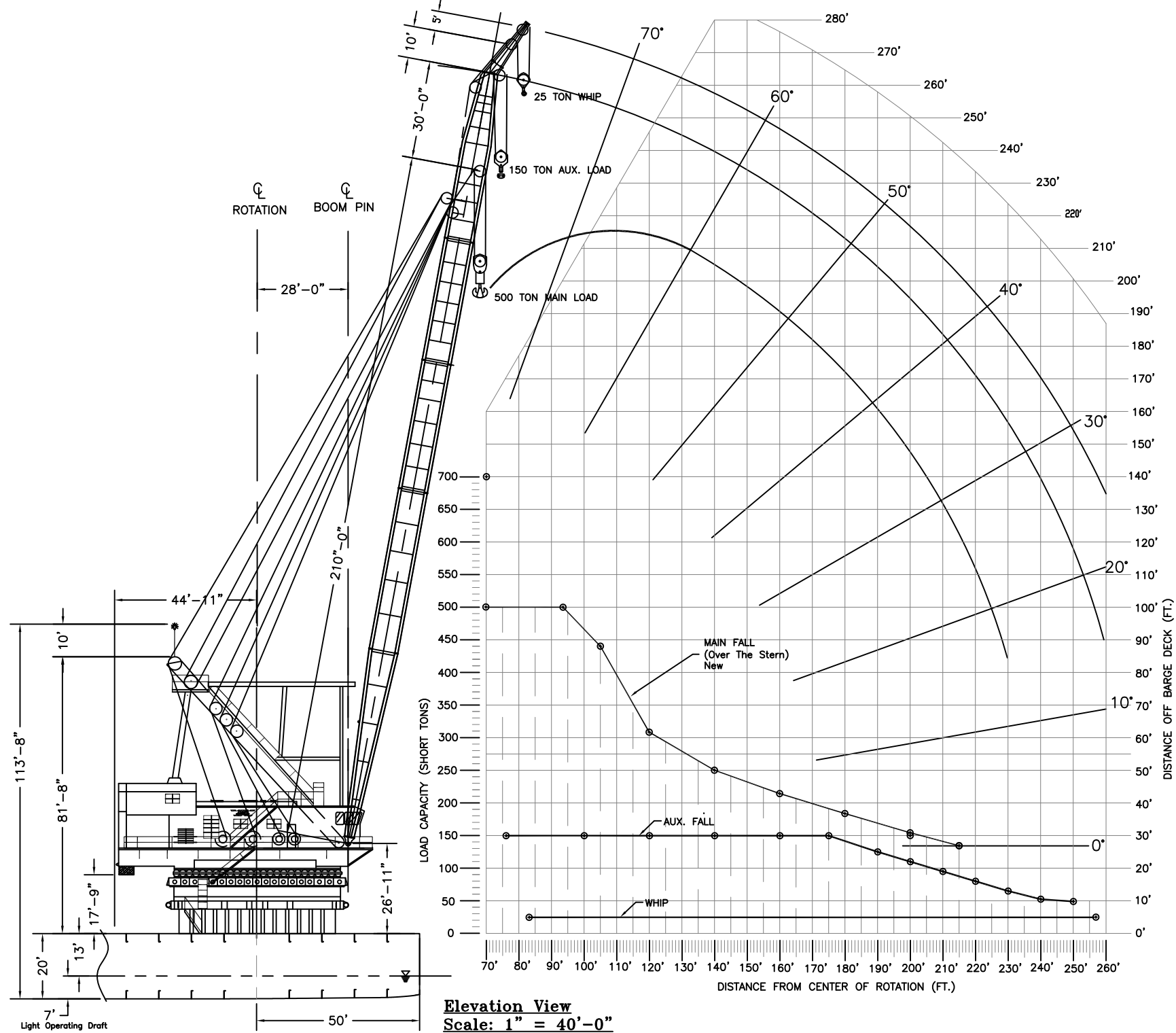
NOTES AND ADDITIONAL INFORMATION

1. For lifts at a radius between listed distances utilize the capacity for the further radius.
2. For capacities between those listed, the radius shall be limited to the shorter radius shown.
3. All capacities in short tons and are net below the hook.
4. Capacity chart conforms to requirements of ASME B30.8. As per ASME B30.8 Section 8-1.2.2, for floating Cranes rated at over 25 Tons maximum allowable list or trim shall be 7°, however 3 degrees is recommended. Wind load created by wind speed of 40 mph shall be considered in establishing operating criteria..
5. Cranesmart load indicators on hoisting lines equipped with audible overload alarm.
6. Cranesmart anti-2-block on hoisting lines equipped with audible limit alarm.
7. Cranesmart boom angle indicator equipped with audible alarm.
8. List and trim inclinometers installed in operators cab.
9. Barge dimensions 310'x99'-6"x20'.

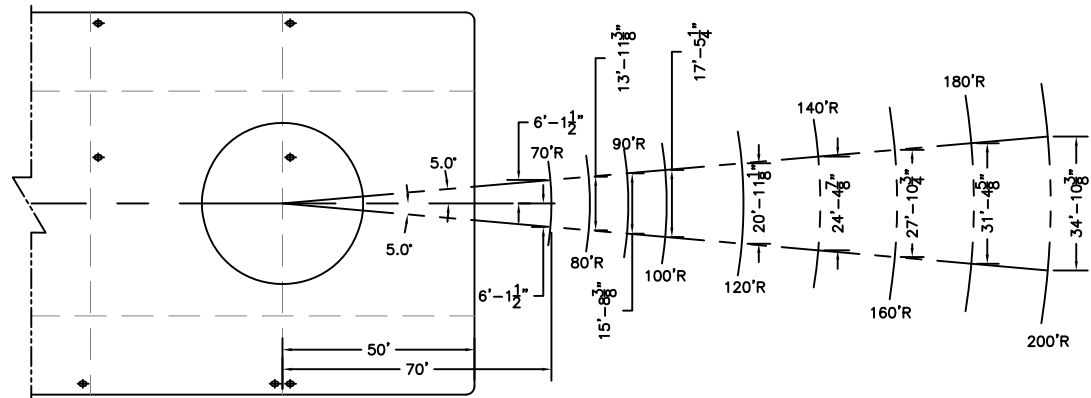
REVOLVER CRANE:

Clyde Iron Works, Duluth, Minnesota - Serial No. CW3869, Model 52-DE-210+30+15
 Roller Circles - 2 Rails, 49'-8" and 52'-0" Diameter -156 Rollers, 20" Diameter
 Bullgear, 44'-0" Diameter
 Counterweight: Pig Iron Ingot and Grout - 441 Tons (Original) ± 162.5 Tons New Added
 Approximate Crane Weight: 1,200,000 Lbs - 600 Tons
 Wire Ropes: Main Block: 24 Parts 1 1/2" Dia. Rope, 6,100 Feet, 6 x 25 IWRC
 Auxiliary Block: 8 Parts 1 3/8 Dia. Rope, 3,100 Feet, 6 x 25 IWRC Rope
 Whip Block: 2 Parts 1 3/8 Dia. Rope, 1,150 Feet, 6x25 IWRC Rope
 Boom Hoist: 20 Parts, 1 5/8 Dia. Rope, 7,125 Feet, 6 x 25 IWRC Rope
 Line Pulls: Main Hoist - 57,000 Lbs. at 210 fpm, all Layers
 Auxiliary and Whip Hoist - 42,000 Lbs at 275 fpm, all Layers
 Boom Hoist- 67,000 Lbs at 160 fpm, all layer

DWG. No.	REFERENCE DRAWINGS	
 WEEKS MARINE, INC. <small>4 COMMERCE DR. CRANFORD, NJ 07016-2497 (908) 272-4010</small>		
Weeks 533 on 2703 Load Chart (360° Full Revolving)		
DESIGN BY: <i>Jitendra Patel</i>	SCALE: As Noted	DWG. SIZE FORMAT: B
CHECKED BY: J.PATEL	DATE: 06/15/2015	
APPROVED BY: <i>J. Patel</i>	SHEET 1 OF 2	REF:
REV. #	DATE	REVISION
1	06/17/15	Revised Aux Block Capcity to 150 S Tons.
BY	DWG. NO.	533-JBP-061715
		REV NO. 1



Elevation View
Scale: 1" = 40'-0"




Plan View Showing Load Pick up Range Over The Stern
Scale: 1" = 50'-0"

OVERSTERN CAPACITIES (SHORT TONS) WITH NO LIST, ROLL, SWING OR LUFFING & DAF = 10% of Hook Load

RADIUS	MAIN	NOTE No.
70'	500	1
75'	500	2
80'	500	
85'	500	
90'	500	
94'	500	
100'	465	
105'	438	
110'	392	
115'	355	
120'	307	
125'	290	
130'	278	
135'	265	
140'	250	
145'	236	
150'	229	
155'	221	
160'	214	
165'	206	
170'	198	
175'	190	
180'	184	
185'	177	
190'	169	
195'	162	
200'	154	
205'	147	
210'	140	
215'	134	
220'		
225'		
230'		
235'		
240'		
245'		
250'		
257'		

- NOTE:** 1. MAX. HOOK TRAVEL BASED ON "TWO-BLOCKING" CONDITION AND AMOUNT OF WIRE ROPE SPOOLED ON DRUM-170'
2. MAX. HOOK TRAVEL BASED ON "TWO-BLOCKING" CONDITION AND AMOUNT OF WIRE ROPE SPOOLED ON DRUM-190'

DWG. No.	REFERENCE DRAWINGS	
 WEEKS MARINE, INC. <small>4 COMMERCE DR. CRANFORD, NJ 07016-2497 (908) 272-4010</small>		
Weeks 533 on 2703 Load Chart (Over The Stern) Special Case		
DESIGN BY: <i>Jitendra Patel</i>	SCALE: As Noted	DWG. SIZE FORMAT: B
CHECKED BY: J.PATEL	DATE: 06/17/2015	
APPROVED BY: <i>J. Patel</i>	SHEET 2 OF 2	REF:
REV. #	DATE	REVISION
		BY DWG. NO. 533-JBP-061715
		REV NO.

1	06/17/15	Revised Aux Block Capcity to 150 S Tons.	J. Patel	APPROVED BY:	SHEET 2 OF 2	REF:
			BY	DWG. NO.	533-JBP-061715	REV NO.